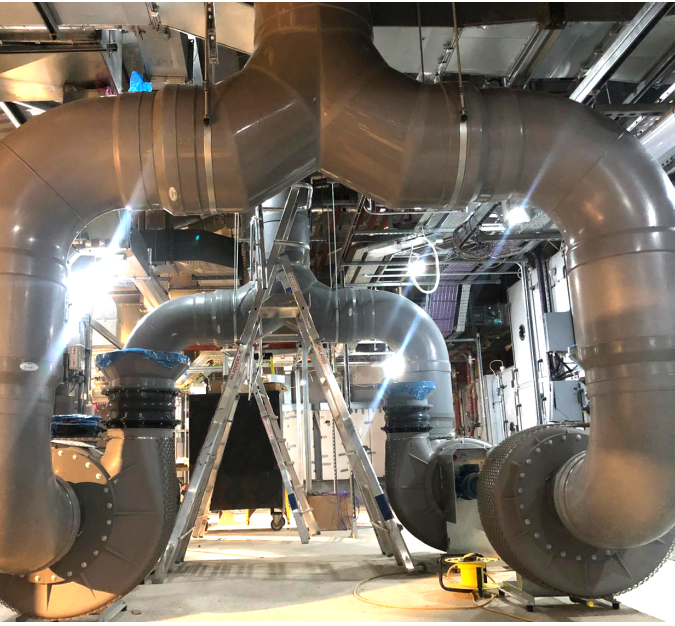


EXFLOW EXTRACTION





EX FLOW



The options for extraction ducting are PVC, PPs, and Stainless steel, circular or rectangular in shape. While a rectangular duct can be a space saver it will also be much more expensive as it would need to be fabricated, while the round duct is generally available off the shelf in most sizes. The most commonly used material is PVC due to its chemical resistance properties. PPS can be used where the duct is exhausting high-temperature fumes (between 60° and 100° degrees Celcius) as it has better temperature resistance but similar chemical resistance to PVC.

Stainless Steel has the least corrosion-resistant properties but the highest fire and heat resistance. The cost of this is huge in comparison to both PPs and PVC.

CSC manufactures an extensive range of customized ductwork using quality PVC & PPs materials. We also carry a wide range of Hoka and Deka products. These include:

PVC Fittings Duct

- Collars
- Reducers
- 45°/90° Bends
- Dampers
- Saddles
- Flange
- And More.....

PPs Fittings Duct

- Collars
- Reducers
- 45°/90° Bends
- Damper
- Saddles
- Flange
- And More.....

We also provide a wide range of chemically resistant fans manufactured from Polypropylene and PVC. Our range can accommodate volumes up to up to 3417 m³/hr +.



