



DISECTION KIT



KOLLE MANDLES LOOPS
Infrared sterilizers.



LABORATORY LIGHT



RECTANGULAR HOTPLATE "PLACFIN"



SLIDE BOXES



**PIPETTE DISPENSERS AND
AUTOMATIC DISPENSERS**



MEASURING RANGE



REPEAT MULTIDISPENSER



PARAFFIN WAX FLOATING BATHS



BLOOD AND CELL COUNTERS



COLONY COUNTERS

Instruments for dissection and slide boxes

Magnifier screen

Wax dispenser and paraffin wax floating

Cooling plates and baths

Stackable anatomy - Histology

Dispensing pipettes

Digital counter for blood and colony counter

Ultraviolet sterilizer and westergren supports

Hand microtome

pages 208 to 211

page 211

page 212

pages 212 to 213

page 214

pages 215 to 217

pages 218 to 219

page 219

page 219



LABORATORY SCISSORS

Made of AISI 410 stainless steel.

1 Scissors universal "Multi purpose" with a serrated/notched blade.

Suitable for cutting hard plastic, cardboard and soft wire etc.

Part No. **1001468** Cut length 50 mm. Total length 180 mm.

2 Large laboratory scissors.

Part No. **1001469** Cut length 100 mm. Total length 250 mm.

3 Multipurpose straight scissors, general use and bandages.

Part No. **1001470** Cut length 50 mm. Total length 140 mm.

4 Multipurpose scissors, general use and bandages.

Part No. **1000806** Cut length 40 mm. Total length 145 mm.

5 Dissection scissors.

Part No. **1000807** Cut length 35 mm. Total length 125 mm.

6 Mini dissection scissors.

Part No. **1001471** Cut length 25 mm. Total length 110 mm.

7 Flat scissors with serrated edge, ideal for laminates, negatives and chromatography.

Part No. **1001472** Flat length 40 mm. Total length 160 mm.



DISSECTION NEEDLES

Plastic handled, AISI 304 stainless steel needle.

Part No.	Point	Total length
1000431	Lancet	140 mm
1000275	Fine	140 mm



DISSECTION NEEDLES

Hexagonal metallic handle with a AISI 304 stainless steel needle.

Part No.	Point	Total length
1001359	Lancet	40 mm
1001360	Fine	140 mm



SCALPEL HANDLE No. 4

Made of AISI 304 stainless steel, comes with three sterile blades No. 20, 22 and 23.

Part No. **1001361**

Spare:

Part No. 1001362	10 sterile blades n° 20
1001363	10 sterile blades n° 22
1001364	10 sterile blades n° 23



ANATOMY SCALPEL

Made of AISI 304 stainless steel.

Blade length: 35 mm.

Part No. **1000809**



DISSECTION KIT

Model Student.

Contents: 1 fine point probe, 1 lancet probe, 1 blunt end forceps, 1 fine tip forceps, 1 scalpel handle n° 4, 3 sterile blades for scalpel handle n° 4, 1 scissors, 1 magnifying glass, 1 style probe, 1 scalpel.

Part No. **1001365**



DISSECTION KIT

Wooden box.

Contents: 1 fine needle, 1 lancet needle, 1 dissection forceps blunt end, 1 forceps fine point, 1 scalpel handle n° 4 with 3 sterile blades Nos. 20, 22 & 23, 1 scalpel and 1 scissors.

Part No. **1001152**

FORCEPS RING SHAPED TIP

AISI 304 stainless steel forceps for picking up swabs and textiles etc.

Part No. **1001192**





DISSECTING FORCEPS AND GENERAL LABORATORY USE

Made of AISI 304 stainless steel with electro-bright finish.

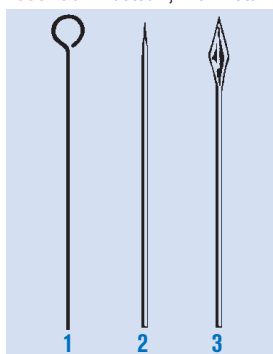
Type	Description	Total length	Part No.
1	Dissecting Straight forceps round tips	140 mm	1000580
2	Dissecting Straight forceps fine tips	140 mm	1000801
3	Dissecting curved forceps round tips	140 mm	1000865
4	Dissecting curved forceps fine tips	140 mm	1000864
5	Sprung straight forceps with curved fine tips	160 mm	1001190



KOLLE HANDLES

Nickel metal handle with loop end of Ni-Cr.
Handle length: 43 mm. Internal loop Ø: 3 mm.
Part No.

- 1000033 Bakelite handle. Handle length: 200 mm.
- 1000488 "Pasteur", with metal handle. Handle length: 290 mm.



1. KOLLE HANDLE

Loop end.
Handle length: 43 mm. Loop Ø: 3 mm.
Part No.

- 1000013 Made of Ni-Cr.
- 1000014 Made of Platinum iridium.

2. NEEDLE FOR KOLLE HANDLE

Made of Ni-Cr.

Part No. 1000802

3. LANCET TIP FOR KOLLE HANDLE

Made of Ni-Cr. Total long: 50 mm.

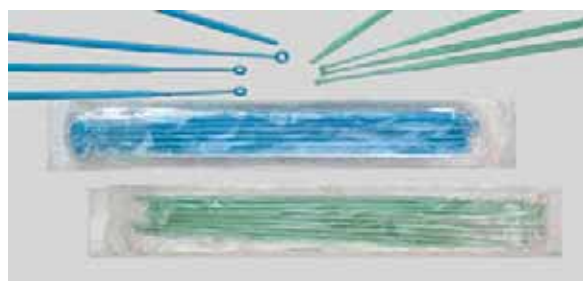
Part No. 1000803

STAND

Support rack for Kolle handles dissection needles made of hardened methacrylate.
Capacity: 6 places.
Part No. 1000903



5	with wood laminate sides		
6	Forceps straight serrated fine point,	160 mm	1001189
	with wood laminate sides.		
7	Laboratory forceps curved point	160 mm	6000128
8	Laboratory forceps fine point	120 mm	1001191



STERILE CULTURE LOOPS

Disposable flexible polystyrene culture handle, one loop and one pointed end.

Part No.	Capacity	Colour	internal loop Ø	In packets of
1000866	1 µl	green	1 mm	20 units
1000867	10 µl	blue	4 mm	20 units



INFRARED TIP STERILIZER "STERILBIO"

Applications

Sterilization of culture tips, needles and small instruments. Incinerates organic material at 900 °C for 5/8 seconds.

Features

Made from ceramic elements with a quality quartz tube interior.

Does not need purged oxygen and can be used in anaerobic environments.

Eliminates problems of aerosols and bacterial contamination.

Support at the side for 4 Kolle handles, needles, lancet or dissecting forceps etc.

Model

Part No.	Height/Width/Depth (exterior) cm	Ø/Length (tube interior) cm	Power W	Weight Kg
3000788	20 13 18	1.4 15	110	1.5



BURNER J-2000 UNIVERSAL

For Butane gas. Instant safety flame, push button ignition, incorporating a LOCK/ON mechanism that prevents accidental fires, the unit switches off when the users hand is removed. Gas filled, using simple lighter gas fuel, as used in common gas lighters. Long life flint. Power by a 1.5 V battery.

Applications: Microbiology, bacteriology, dentistry and for general use where a fine hot flame is required for fast heat and fusion.

Part No. **1001114**



GLASS SLIDES

Slides, unground of 26 x 76 x 1.5 mm thickness.

Box of 72 units.

Part No. **5600400**

Slides of 26 x 76 x 1.5 mm with ground end of 26 x 20 mm for writing.

Box of 72 units.

Part No. **5600399**

Cover slide of 18 x 18 mm.

Box of 100 units.

Part No. **5600396**

Cover glass of 22 x 22 mm.

Box of 100 units.

Part No. **5600397**

Cover glass of 24 x 24 mm.

Box of 100 units.

Part No. **5600398**



RECTANGULAR HOTPLATE "PLACFIN"

Adjustable temperature from ambient+5 °C to 130 °C.

Stability ± 3 °C. Not suitable for boiling.

Coated with chemically treated aluminium, enamelled outer case.

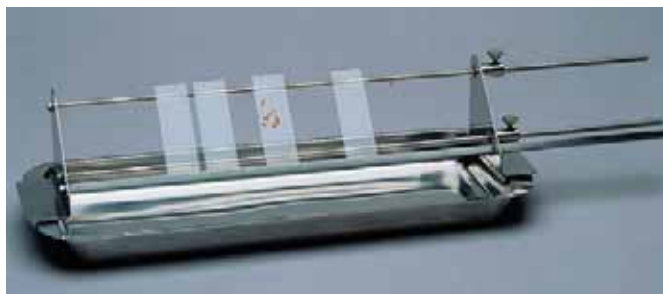
Part No.	Width/Depth (plate) cm	Height/Width/Depth (exterior) cm	Power W	Weight Kg
7000497	23 22	8 22 30	400	3.7

ACCESSORY: Slide support rack for Placfin

"Placfin" slide support adapter.

Made of AISI 304 stainless steel. Capacity: up to 18 slide of 76 x 25 mm (in a horizontal or inclined position).

Part No. **7000498**



SLIDE STAINING STAND

Extendible and made of AISI 304 stainless steel. Fits tanks and trays up to 50 cm in length. Capacity 12 to 14 slides inclined at an angle.

Part No. **6000904**

ACCESSORY: Long rectangular instrument tray.

Made from AISI 304 stainless steel, 350mm long x 150mm wide.

Part No. **8080207**

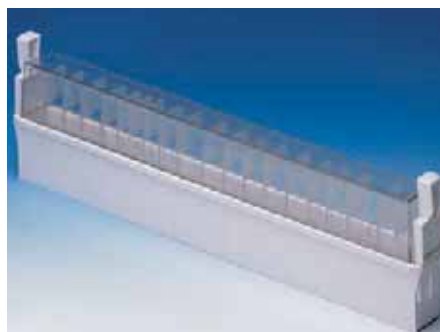


SLIDE DISPENSER

Made of ABS plastic with a transparent polycarbonate lid. With single slide manual extraction.

Capacity 50 slides of 76 x 26 mm.

Part No. **1001366**



SLIDE SUPPORT RACK, FOR 26 x 76 mm SLIDES

Made from ABS plastic with transparent polycarbonate lid. Holds 100 slides in a vertical position, with numbered guides and index table.

Part No. **1001367**



FORCEPS FOR LIFTING SLIDES

Made of AISI 304 stainless steel, with flat jaws.

Length: 105 mm. Suitable for lifting, slides, watch glass or small flat object.

Part No. **1000105**



LABORATORY LIGHT "LABOR-LAM"

Used for the classification and manipulation of blood images of; anti serum transparencies, albumin control, RH tests, colony counting, micro examination, colloidal rings, observation of precipitates, acid and oil filters etc. Swivel accessory for bench or wall mount bracket. Light: white light with diffusing methacrylate screen. Temperature 30 °C to 35 °C on the screen surface. Screen light: 300 mm long x 85 mm wide. External dimensions: 320 mm long x 130 mm wide x 55 mm high. Power: 8 W.

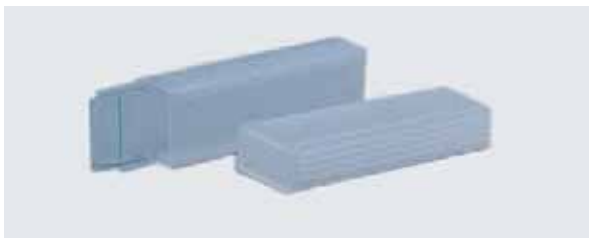
Part No. **3000438**

ACCESSORY: Table top support. Swivel type. Part No. **7000483**



STORAGE BOX FOR 26 x 76 mm SLIDES

Made of white ABS with a hinge lid and catch, numbered slots for slides and a cork base. An index for slide identification is placed inside the lid. Part No. **1001371** for 100 slides



SLIDE BOXES

Holds 5 slides, made of polypropylene. Ideal for personal use. Dimensions: 82 mm long x 30 mm wide.

Part No. **1000869**



Magnifier screen

ILLUMINATED SCREEN

Small screen specially designed to illuminate slides, Petri dishes Slides, electrophoresis gels, etc. Observation zone, 127 mm long x 102 mm wide. Illumination power four AA batteries (included).

Part No. **5310508**

Accessory

Mini pivotal magnifier 1.75X magnification, 185 mm long x 100mm wide with support 207mm high.

Part No. **5310509**



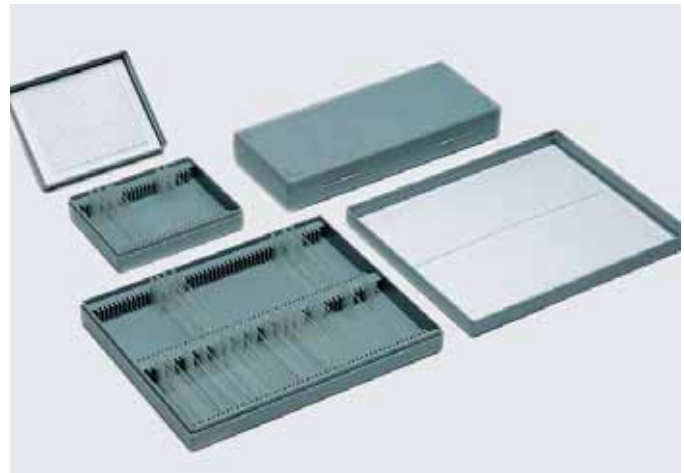
SLIDE BOX FOR STORING 26 x 76 mm SLIDES

PVC base, colour white, with numbered dividers.

Index in the lid interior.

Part No. **1052050** for 50 slides

Part No. **1052100** for 100 slides



STORAGE BOX FOR SLIDES OF 26 x 76 mm

Made of polystyrene with numbered slots and index in the lid.

Part No. **1001368** for 25 slides

Part No. **1001369** for 50 slides

Part No. **1001370** for 100 slides



EPS SLIDE HOLDER FOR 5 SLIDES

Polystyrene slide holder designed for transporting and preservation of samples and the mailing of slides with safety, such as blood samples, serum and section samples. System of 5 divided sections to prevent rubbing against each other in transit. Up to 10 slides (75 x 24mm). A fitted lid holds the slides in place.

Dimensions: 53 mm height x 100 mm long x 63 mm deep.

Part No. **1001717** Packs of 25 units





Cooling plate "Plac-Center"

DIGITAL DISPLAY WITH ANALOGUE TEMPERATURE CONTROLLER.
ADJUSTABLE TEMPERATURES FROM -10 TO 5 °C.

APPLICATIONS

Designed to keep material in a solid state.

FEATURES

External case made of AISI 304 stainless steel. Cooling plate made of black anodised aluminium.
Anti vibration, hermetically sealed CFC free compressor.

CONTROL PANEL

Illuminated Mains ON/OFF switch.
Analogue electronic temperature control with digital display (2 digits).
Resolution: ± 1 digit.
Temperature probe: PTC.

MODEL

Part No.	Width/Depth (plate) cm	Height/Width/Depth (exterior) cm	Power HP	Power W	Weight Kg
4000501	30 15	27 33 50	1/3	160	15



Wax dispenser "Dispenser"

ADJUSTABLE TEMPERATURE FROM AMBIENT +5 TO 100 °C.
STABILITY ± 1.5 °C.

FEATURES

External metal case coated with epoxy. Internal tank made of aluminium coated with black indelible PTFE. Independently heated tap.

CONTROL PANEL

Illuminated Mains switch.
Indicator lamp shows when the heater is on.
Adjustable temperature thermostat controller.
Adjustable tap temperature controller.

MODEL

Part No.	Capacity litres	Ø / Height (usable) cm	Ø / Height (exterior) cm	Power W	Weight Kg
4000490	4	20 15	28 30	400	5



Paraffin wax floating out bath for histology samples "Termofin"

ADJUSTABLE TEMPERATURE FROM 40 °C TO 80 °C. STABILITY ± 1 °C.

APPLICATIONS

Suitable for the fusion and preservation of paraffin wax in a liquid state that enables the users to see the floated sections.

FEATURES

Bath and lid made of black PTFE coated aluminium with a location hole in the lid for a thermometer.

CONTROL PANEL

Mains ON/OFF switch. Adjustable temperature thermostat synchronised with an indicator lamp while heating.

MODEL

Part No.	Capacity litres	Ø / Height (usable) cm	Ø / Height (exterior) cm	Power W	Weight Kg
3000459	4	25 10	34 14	430	2.3

Supplied complete with lid and thermometer.

ACCESSORY

Thermometer support (can only be used without the lid).
Part No. **6004591**

PTFE coated lid





Staining tanks "Colour Com" made from glass.



Staining tank with screw cap hermetically sealed lid.

STAINING TANK

Part No.	Type	Height / Width / Depth (exterior) mm	Slide quantity	Applications
1001138	1	85 105 70	10 of 76 x 26 mm	Tank with lid, requires rack No. 2 that is placed inside.
1001139	2	30 90 48	10 of 76 x 26 mm	Tank rack, bottomless, submerge in No.1 tank.
1001140	3	105 60 55	16 of 76 x 26 mm	Hellendahl vertical tank with lid.
1001141	4	50 85 70	10 of 76 x 26 mm	Horizontal staining tank with lid.
1001142	5	105 45 45	10 of 76 x 26 mm	Coplin, vertical staining tank with lid.
1001352	6	110 56 56	10 of 76 x 26 mm	Coplin, staining tank made of polyethylene with lid.



1. ANGLE FORM MOULDS

For paraffin wax covers.

Supplied as two separate angular plates made of AISI 304 stainless steel.

Part No.	Height / Width / Depth (usable mould) mm	Part No.	Height / Width / Depth (usable mould) mm
6051622	14 22 44	6051645	20 45 85
6051635	20 35 65	6051690	25 90 150

2. COMPACT MOULDS WITH LID

For tissue covered moulds.

Part No.	Height / Width / Depth (usable mould) mm	Part No.	Height / Width / Depth (usable mould) mm
7051720	9 20 20	7051735	9 26 35
7051725	9 25 25	7051740	9 26 40

3. ROUND INSERT MOULDS

Made of perforated AISI 304 stainless steel with lid.

Part No.	Ø mm	Height mm
1051837	37	8



Cooling bath "Refricub"

ELECTRONIC CONTROL WITH DIGITAL DISPLAY
ADJUSTABLE TEMPERATURE DOWN TO -25 °C.

APPLICATIONS

Suitable for maintaining paraffin wax and waxes in a solid form for long periods of time, etc.

FEATURES

Temperature homogeneity: ± 2 °C.

Precision of temperature controller: 1 °C.

External case made of epoxy covered metal with AISI 304 stainless steel tank and top.

An anti vibration hermetically sealed CFC free compressor is mounted in the base of the unit, supplied with ventilated evaporator, regulating valve and condenser.

CONTROL PANEL

Illuminated mains indicator switch.

Electronic controller for temperature with two digit digital display with a resolution of: ± 1 digit.

PTC probe.

Part No.	Capacity litres	Height/Width/Depth (tank) cm	Height/Width/Depth (exterior) cm	Power HP	Power W	Weight Kg
4100519	18	20 30 31	80 46 44	3/8	350	22





Chromatography tanks

APPLICATIONS

For quantitative analysis. Useful for storing and protecting the plates by means of the hermetic upper lid.

FEATURES

Made of heavy thick glass, with a flat bottom, ground rims with rounded edges. Solid glass rectangular lid, smooth base with ground edges to make an air tight fit tank. Rectangular glass lid with handle, smooth base and ground surface for hermetically sealed closure with the tank.

MODELS	Part No.	Dimensions mm	N° of plates	With Lid
MINICROM	1001162	100 x 100	1	Yes
CROMACROM	1001163	200 x 200	1	Yes
MULTICROM	1001164	200 x 200	5	Yes

The model MULTICROM has 5 plate slots to maintain the plate upright.



Stackable Anatomy - Histology sample storage chest

FEATURES

Manufactured in steel epoxy coated. Resistant to corrosive atmospheres.

STACKABLE MODULAR SYSTEM

Cabinet for storing slides.

Complete with 14 drawers for slides of 26 x 76 mm.

Drawer capacity: 350 slides.

Part No. **1052014**

Cabinet for storing transparencies.

Complete with 7 drawers for transparencies of 50 x 60 mm.

Drawer capacity: 230 transparencies.

Part No. **1005207**

Cabinet for storing paraffin wax mounted samples.

Complete with 10 drawers.

Part No. **1052010**

MODELS

Part No.	Height / Width / Depth (usable) cm	Height / Width / Depth (exterior) cm	Weight Kg
1052014	9 2.6 45	14 48 48	9.5
1005207	7.2 5.8 47	12 12 48	6.5
1052010	2.6 43.5 47	34.5 48 48	18.5

Base and lid units

Mounted on the top or as a support base. Fits the individual modules to form distinct user definable cabinets.

Part No.		Height / Width / Depth (external) cm	Weight Kg
1005208	Base	5,5 48 48	2,5
1005209	Lid	5,5 48 48	2,5





Fixed volume dispensing pipettes "Dispen-Fix"

WITH CALIBRATION CERTIFICATE WITH SERIAL NUMBER REFERENCE.

FEATURES

Fixed volume pipettes from 1 to 1000 µl, model dependent.

Simple and easy to use.

Discard tip ejection for all models.

Comes complete with calibration tool.

MODELS	Part No.	Capacity µl	Accuracy %	Precision %
Dispen-Fix	5904009	5	±2.0	< 0.8
Dispen-Fix	5904010	10	±1.6	< 0.5
Dispen-Fix	5904011	20	±1.0	< 0.3
Dispen-Fix	5904012	25	±1.0	< 0.3
Dispen-Fix	5904013	50	±0.8	< 0.3
Dispen-Fix	5904014	100	±0.8	< 0.25
Dispen-Fix	5904015	200	±0.8	< 0.15
Dispen-Fix	5904017	500	±0.8	< 0.2
Dispen-Fix	5904018	1000	±0.8	< 0.13



Original Comecta design



Variable volume dispensing pipettes "Dispen-Var"

WITH CALIBRATION CERTIFICATE WITH SERIAL NUMBER REFERENCE.

AUTOCLAVABLE UP TO 121 °C.

FEATURES

Variable volume from 1 to 5000 µl, model dependent.

Simple and easy to use adjustable dispense volume.

Digital set volume selection.

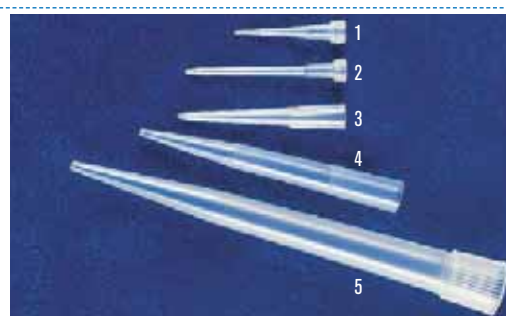
Discard tip ejection for all models up to 1000 µl.

Comes complete with calibration tool.

MODELS	Part No.	Capacity µl	Divisions µl	Precision %
Dispen-Var	5900010	1 - 10	0.1	< 1.5 - < 0.4
Dispen-Var	5900020	2 - 20	0.1	< 1.5 - < 0.8
Dispen-Var	5900100	10 - 100	1	< 1.0 - < 0.3
Dispen-Var	5900200	20 - 200	1	< 1.0 - < 0.5
Dispen-Var	5901000	100 - 1000	10	< 0.8 - < 0.28
Dispen-Var	5905006	1000 - 5000	10	< 0.4 - < 0.2

ACCESSORIES. PIPETTE TIPS. Accurate and precise, made of polypropylene.

Models N° image	Part No.	Range µl	Colour	Qty. tips x part No.	Suitable for pipette part No.	Volumes pipette µl
1	5490040	0.1- 10	Transparent	1000	5904009	5
					5904010	10
					5900010	1 - 10
2	5490041	2 - 20	Transparent	1000	5900020	2 - 20
					5904011	20
					5904012	25
3	5490042	5 - 200	Transparent	1000	5904013	50
					5904014	100
					5904015	200
4	5490044	101 - 1000	Blue	1000	5900100	20 - 100
					5900200	50 - 200
					5904017	500
5	5490047	1000 - 5000	Blue	500	5904018	1000
					5901000	100 - 1000
					5905006	1000 - 5000



Pipette rack.
Made of AISI 304 stain-
less steel. No. of places:
6 dosing pipettes up to
28 cm in length.
Part No. **1001215**



Repeat multi dispenser "Repette-HW"

UP TO 49 SUCCESSIVE DISPENSES WITHOUT THE NEED TO REFILL.
DISPENSING VOLUME FROM 2 µl UP TO 5000 µl.

COMECTA

FEATURES

Multi dispenser pipette.
Precise repeat dispenser.
Ideal for dispensing low and high viscosity liquids.
Designed for rapid dispensing.
Depending on the setting, the dispenser can discharge up to a maximum of 49 times successively, without the need to be refilled.

Accepts 8 different syringes.

Precision table using COMECTA syringes. (These values are based on a maximum volume for each pipette using distilled water at ambient temperature):

Type syringe ml	Volume doses µl	Precision nominal volume A ≤ ±%		Variation coefficient nominal volume CV ≤ %	
		10%	2%	-10%	2%
0.5	10 - 50	0.8	4.0	0.6	1.4
1.25	25 - 125	0.8	4.0	0.3	0.8
2.5	50 - 250	0.7	3.5	0.2	0.8
5	100 - 500	0.5	2.5	0.2	0.6
12.5	250 - 1250	0.3	1.5	0.2	0.4
25	500 - 2500	0.3	1.5	0.2	0.4
50	1000 - 5000	0.3	1.5	0.15	0.4

Dispense volumes from 2 µl up to 5000 µl, depending on syringe used.

Maximum viscosity per syringe is:

50 ml = 20 mPas, 5 ml = 260 mPas and 1.25 ml = 977 mPas.

Maximum pressure: 500 mbar.

Operating temperature: from 15 to 40 °C.

At the back of the dispenser shows a quick table reference of the volume and dose, that shows the repeatable dose from the syringe to be used and the correct slide position.

Includes an easy to locate wall or bench support.

Supplied complete with a 5 ml syringe and an autoclavable PP adapter for 25 and 50 ml syringes.

Repeat multi dispenser "Repette HW".

Part No. **5490050**

ACCESSORIES

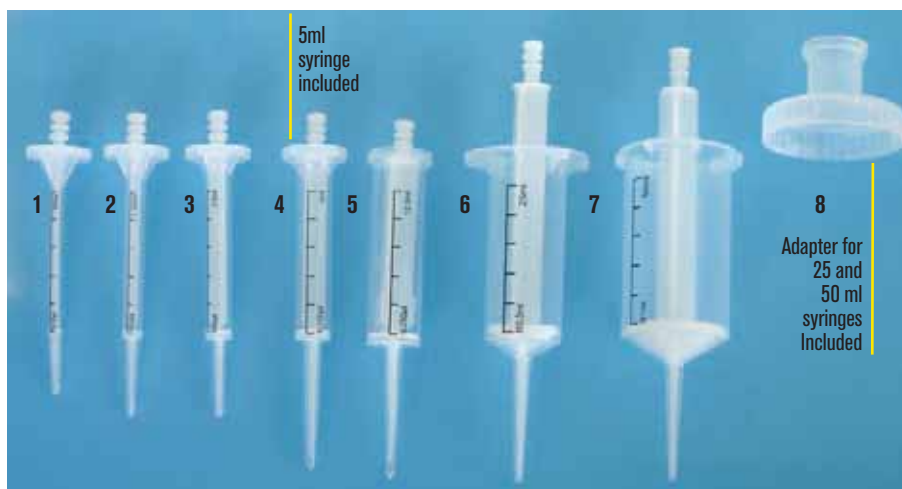
Steril syringes

Supplied in individual bag.

Image N°	Part No.	Volume ml	Syringes x part No.
1	5490053	0.5	100
2	5490054	1.25	100
3	5490055	2.5	100
4	5490056	5	100
5	5490057	12.5	50
6	5490058	25	50
7	5490059	50	50

SPARE

8	5490060	Adapter made from PP for 25 and 50 ml syringes
---	----------------	--



0.1ml syringe can also be fitted for dispense volumes down to 2 µl



Motorized pipette dispenser "Rota-Filler 3000®"

FOR ANY KIND OF PIPETTES FROM 1 TO 100 ML.



NEW

FEATURES

Three positions switch for fast or slow aspiration and dispensation or gravitatorial dispensation for free dispensing.

The pressure over the ergonomic bulbs allows modulation, speed control of aspiration and dispensation.

It is supplied with a couple of 0,45 µm filter by default for and effective protection against contaminated air either of the equipment during aspiration or of the sample during dispensation.

Two rechargeable and interchangeable batteries.

Low-battery light indicator signal.

Can be used while recharging.



TECHNICAL DATA

Charger of 65/12 mA. Charge time: 14 hours.

Weight: 215 g.

Dimensions: 170 height x 47 width x 143 length mm.

Pipettes: from 1 to 100 ml (glass and plastic).



Motorized pipette dispenser "Rota-Filler 3000®".

Part no: **5900700**

COMPLEMENT

5 hydrophobe filters pack of 0,45 µm.

Part no: **5900701**



It includes bench top support.



It includes wall support.



Manual pipette dispenser "Pipet"

FOR ANY KIND OF PIPETTES FROM 1 TO 100 ML.

FEATURES

Ergonomic, comfortable, solid, lightweight and ease of use.

It has been designed with an ultracompressor silicone bulb that provides a soft manual control of the pipette, either in aspiration or dispensation.

Once the bulb is squeezed, control with the toggle both speeds, the aspiration and dispensation one. Push the middle button to expel blowing-out any liquid remaining in the pipette. 0,45 µm .

Measure: 25 mm Ø.

Weight: 130 g.

Manual pipette dispenser "Pipet". Part no **5900800**

COMPLEMENT

5 hydrophobe filters pack of 0,45 µm.

Part no: **5900801**



NEW

Precise pipet control

Compatible with aspiration and dispensation



Measuring range "COM-PIP"

FEATURES

Made of polypropylene with silicon joints, for volumes up to 25 ml. Precise and safe, ergonomic design that allows filling and emptying without having to change the setting. Flexible thermoplastic seal against any type of burette. A button on the side empties the burette automatically. Easily dismantled and cleaned.

Part No.

1001131

Capacity

0 to 2 ml

Identification colour

Blue

1001132

0 to 10 ml

Green

1001133

0 to 25 ml

Red



PIPETTE RACK "COM-PIP"

Made from AISI 304 stainless steel.

Capacity 6 pipettes of differing sizes.

Part No. **1001702**





Digital cell counter for blood components "CC-1431"



FEATURES

Designed for any type of cell or type counting and blood analysis.

Languages: Spanish, English and French.

Operating menu displayed on the screen, 4 LCD lines of 20 characters per line.

Visualization of data can be displayed as partial, total, and absolute or percentage of key strokes.

Possibility to correct the last count.

Memorizes the last pulsed count and identifies it on the screen.

Audible pulse control when the key is pulsed, advises when the count limit is reached.

Up to 14 separate key inputs per program.

Power: 12 V. Includes mains adapter.

RS232 interface for download of results to a computer.

RS232 connection cable, included.

Includes software for PC with the following parameters: Patient Number, Laboratory name, Date, Hour, Comments and comparison of previous results after treatment.

```
COUNTER LEUC
Count. Clr Esc
Total: 3 End: 100
10 Tox Gr: 1
```



FOUR PROGRAMS INCLUDED:

LEUC (leukocytes)

- Leukocyte count.

- 14 different cell types.

- 3 Keys for counts that are not used in the final count:

(«11. Normo» «12. Tox Gr» «14. Ery»).

- Total cell count (at the end of counting) selectable from 100 to 1000 in steps of 100.

MYEL (myelocytes).

- Myelocytes count.

- 14 different cell types that accumulate to the total count.

- Total cell count selectable from 100 to 1000 in steps of 100.

RETI (reticulocytes/erythrocytes)

- Reticulocytes count.

- No. of cells by configurable view from 50 to 250.

- 1 Key for reticulocyte fields.

- 1 Key for erythrocytes that are not included in the final count.

- Total (end of count) fixed at 1000.

FREE (program, customer set)

- Configurable count.

- Each key can be activated or deactivated for the count.

- Total cell count (at the end of counting) selectable from 100 to 1000 in steps of 100.

KEYS

Two control keys:

- SELECT: choose one program or one option.

- ENTER: accept the option choose.

14 Keys for different cell types:

- Seg: Segments or granulocytes.

- Myelo: MieloBlasts.

- Eos: Eosinocytes.

- At Ly: Linfocytes untypical.

- Lym: Linfocytes.

- My Bi: Mielococytes Binucleads.

- Mono: Monocytes.

- Normo: NormoBlasts.

- Stab: Bands.

- Tox. Gr.: Granulocytes toxic.

- Baso: Basocytes.

- Reti: Reticulocytes.

- Met My: Metamielococytes.

- Ery: Eritocytes / EritoBlasts.

MODEL

Part No.	Height / Width / Depth cm	Power W	Weight Kg
7121431	7 15 22	6	0.6

```
J.P. SELECTA, s.a.
08:45 Jun. 22, 2007 page 1
Hospital San Pedro
Patient name: XXX

"Total: 29"
" 1 Seg: 1 3,44 %"
" 2 Eos: 1 3,44 %"
" 3 Lym: 2 6,89 %"
" 4 Mono: 1 3,44 %"
" 5 Stab: 5 17,24 %"
" 6 Baso: 3 10,34 %"
" 7 Met My: 5 17,24 %"
" 8 Myelo: 1 3,44 %"
" 9 At Ly: 2 6,89 %"
"10 My Bl: 6 20,68 %"
"11 Normo: 2 "
"12 Tox Gr: 1 "
"13 Reti: 2 6,89 %"
"14 Ery: 2 "
```

Report.

ACCESSORY

Ink printer (not thermal). Paper 2 1/4" (56 mm) wide. Interface RS232. Includes cable and power transformer for 5V - 3A.



Model

Part No.	Height / Width / Depth cm	Weight Kg
4120113	4 16 10	1



Software download and report.



Colony counter "Digital S"

FOR PETRI DISH OF UP TO 100 mm DIAMETER.

APPLICATIONS

Molecular Biology, Genetics and microbiology.

FEATURES

The unit records each pulsed colony count on the digital screen to a total of 999 counts. Pressure to count can be made by any way (pencil, or pen tip etc.). Epoxy coated casing. Reversible interior background part in white or black. Steady, (glare free) fluorescent illumination, clear and wide view visibility. Removable plates for housing varying sizes of Petri dishes. Location for reversible contrast plates. Magnifying glass X2 with adjustable height and rotation support

CONTROL PANEL

Mains switch.
Numerical digital display: 3 digits.
Audible confirmation beep for each count. Zero reset button. RESET.

MODEL

Part No.	Ø of magnifying glass cm	Magnification	Height / Width / Depth (exterior) cm	Power W	Weight Kg
4905000	12.5	2x	25 23 30	20	3.5

Supplied complete with Wolffhuegel disc.



ACCESSORY

5 Wolffhuegel discs.
Part No. **4905001**

BENCH TOP ULTRAVIOLET RADIATION STERILIZER "U.V. ESTÉRIL"

Fast destruction of germs by U.V. radiation based on the principle that albuminoid bodies absorb energy that which prevents germination and reproduction of the bacteria. Suitable for destroying: bacteria, virus, spores, yeast and mildew.

FEATURES

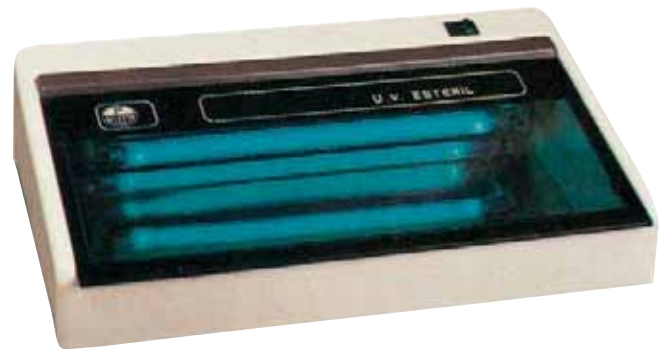
Main body made of expanded polystyrene, with a polished AISI 304 stainless steel tray that reflects the U.V. radiation and a protective smoke coloured methacrylate top that allows the samples to be seen and at the same time, it is opaque to U.V. light. U.V. Wave length: U.V. 2537 Angstroms.
U.V. lamp life span: 5000 hours approx.

CONTROL PANEL

Illuminated Mains switch.
To prevent accidental sight or skin damage a safety micro-switch that cuts off the power if the U.V. protective cover is removed.

MODEL

Part No.	Height/Width/Depth (interior) cm	Height/Width/Depth (exterior) cm	Power W	Weight Kg
3000416	7 to 9 50 20	17 57 38	15	7.5



WESTERGREN SEDIMENTATION PIPETTE SUPPORT STAND

Sedimentation tube support stand.
Made of AISI 304 stainless steel.
Supports pipettes with a replaceable vial type rubber plug. Easy to clean.
Sectioned, tilted, 45 °C front panel scribe board for notes.
Designed so that the tubes can be mounted only with one hand.

Part No.

1000093 Three Place.

1000096 Six place.

1000912 Twelve place.



HAND MICROTOME

Cylindrical hand microtome, that can achieve a minimum cut of 10 µm, using a manual advanced mechanism.

External milled knob with a micrometer scale of 50 divisions of 10 µm.

Maximum sample section of 20 mm.

Precise internal sample holder with a maximum aperture of 8 mm.

Part No. **5900019**

Supplied complete with a carry case, dissection forceps, blade and a 5 mm thick glass base.

