



MANUFACTURED IN IRELAND
www.csc.ie sales@csc.ie
Phone: 353 (0)1 835 1311
Fax: +353 (0)1 835 1580

LABORATORY FURNITURE

Labflow





MANUFACTURED IN IRELAND
www.csc.ie sales@csc.ie
Phone: 353 (0)1 835 1311
Fax: +353 (0)1 835 1580

LABORATORY FURNITURE

Labflow

About Us

CSC is the leading supplier of Laboratory Fume Cupboards in Ireland. Since 1980, we have been supplying customers with the best laboratory equipment available and backed up by an incredible after sales service.

In 2007, we expanded our portfolio by introducing a range of custom laboratory furniture known as the LabFlow range. The success has been remarkably, proving once again CSC's ability to deliver high quality products tailored to individual customer needs.



Our dedication to quality ensures that we only select the best material available from around the world. With expertise in custom designed laboratory solutions and a range that includes laminate and stainless steel furniture, CSC are the experts in high quality laboratory design and installation.

As different laboratories have different requirements, whether pharmacy, computer, chemistry or bio-science, CSC has designed and developed a Laminate range to provide a flexible and adaptable laboratory system.

Available in fixed, suspended and mobile options, careful attention to detail and an understanding of the requirements of users in situations with perimeter and peninsular layouts and including various re-agent shelves, ensures that CSC maintains a leading position in laboratory design and installation.



MANUFACTURED IN IRELAND
www.csc.ie sales@csc.ie
Phone: 353 (0)1 835 1311
Fax: +353 (0)1 835 1580

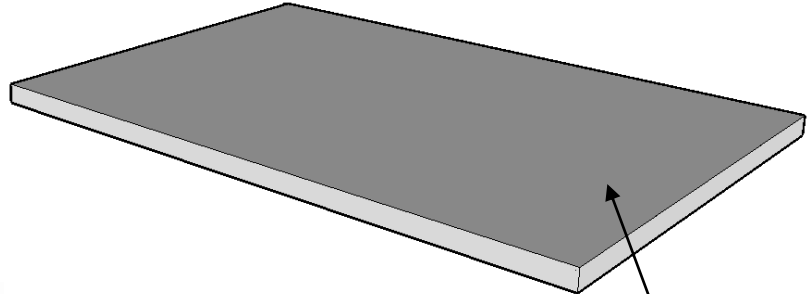
LABORATORY FURNITURE

Labflow

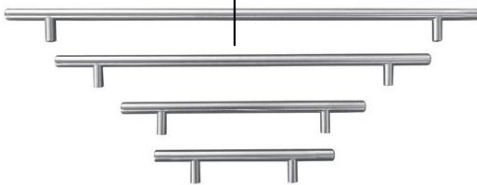
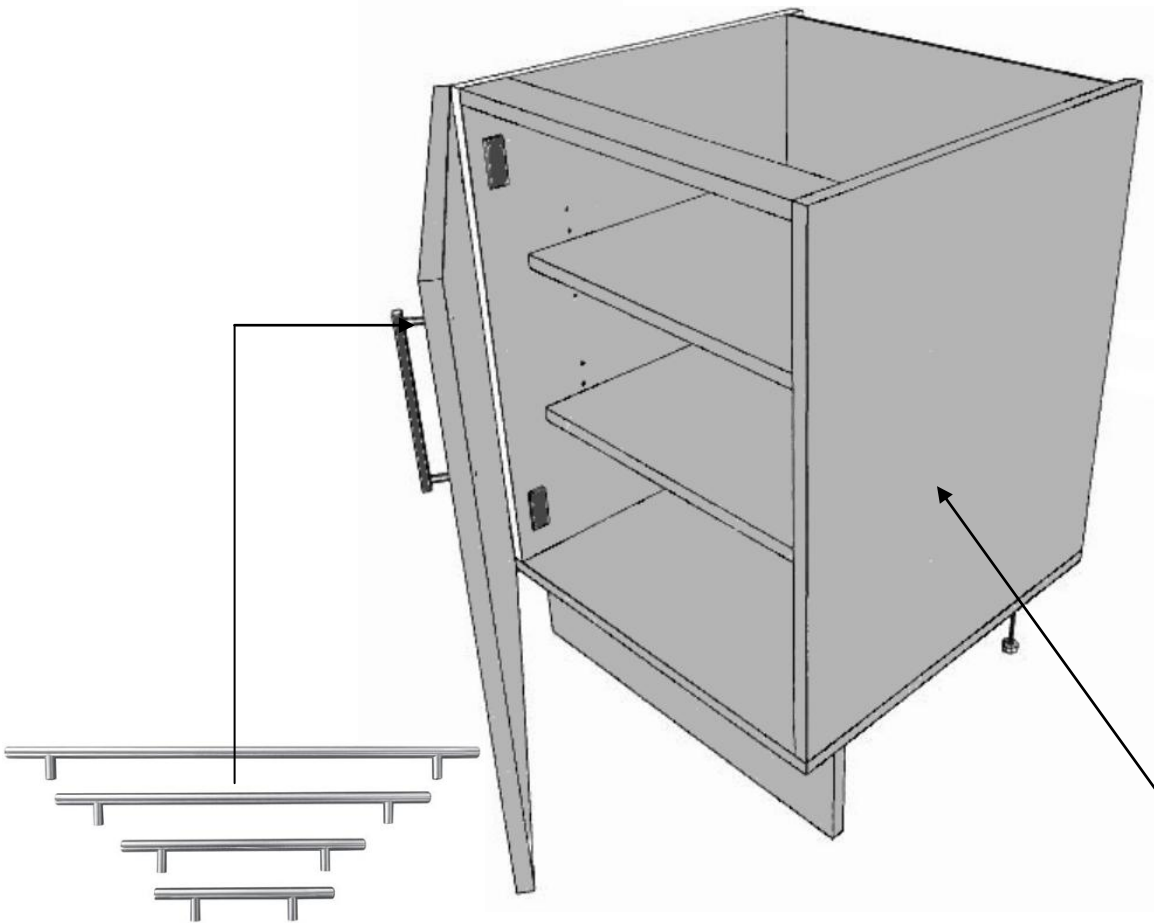
CSC LabFlow Furniture



High Quality 165° Hinges



High Quality Trespa Worktop



High Quality Handles
*Available in Various Colours,
Shapes and Sizes*



High Quality Melamine Laminate
Available in Various Colours



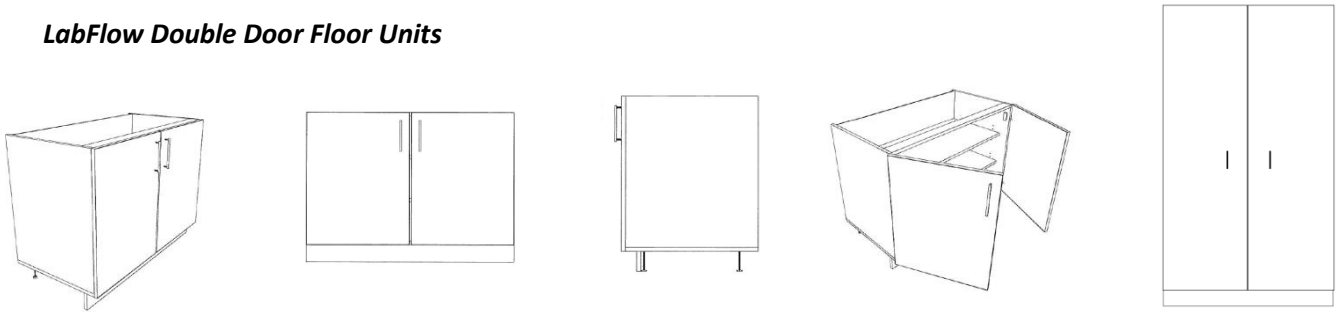
MANUFACTURED IN IRELAND
www.csc.ie sales@csc.ie
Phone: 353 (0)1 835 1311
Fax: +353 (0)1 835 1580

LABORATORY FURNITURE

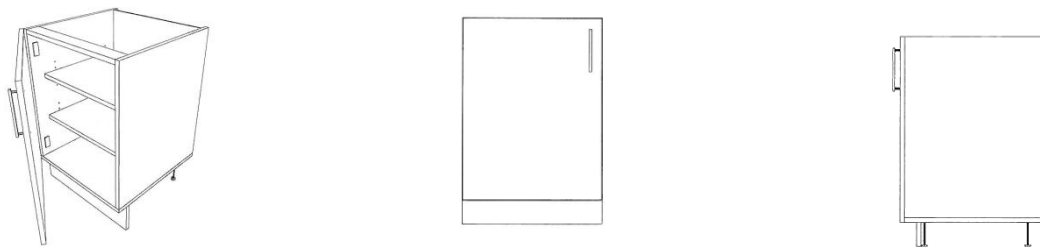
Labflow

Examples from Our LabFlow Range

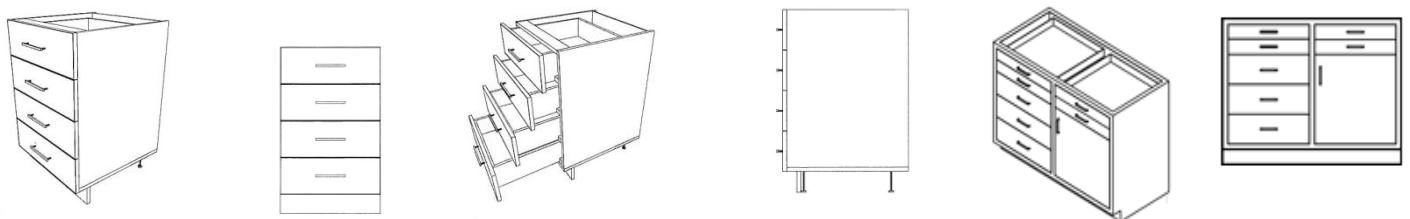
LabFlow Double Door Floor Units



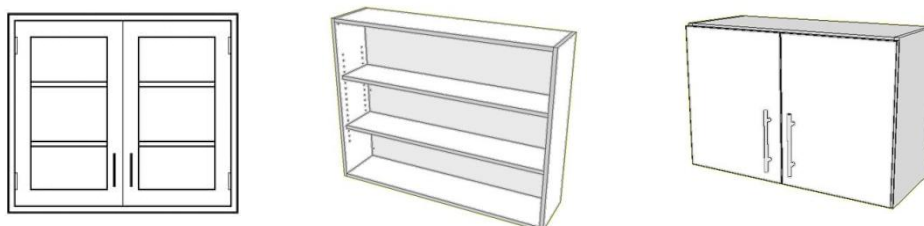
LabFlow Single Door Floor Units



LabFlow Multiple Drawer Units



LabFlow Wall Units





MANUFACTURED IN IRELAND
www.csc.ie sales@csc.ie
Phone: 353 (0)1 835 1311
Fax: +353 (0)1 835 1580

LABORATORY FURNITURE

Labflow

Epoxy Resin Sinks

Epoxy Resin Sinks complete the lab and are available in many depths, sizes and shapes. Epoxy is the only lab



grade work surface system with moulded sinks of the same durable material. CSC offers a choice of Drop In and Under mount styles as well as specialty sinks for numerous applications.

There may be some situations in which a standard range of sink tops may not meet clients' exact requirements. CSC can fabricate a custom sink top to the size and layout that is required.



MANUFACTURED IN IRELAND
 www.csc.ie sales@csc.ie
 Phone: 353 (0)1 835 1311
 Fax: +353 (0)1 835 1580

LABORATORY FURNITURE

Labflow

Sample Client List



More available on request.....

Project Gallery



MANUFACTURED IN IRELAND
www.csc.ie sales@csc.ie
Phone: 353 (0)1 835 1311
Fax: +353 (0)1 835 1580

LABORATORY FURNITURE

Labflow





MANUFACTURED IN IRELAND
www.csc.ie sales@csc.ie
Phone: 353 (0)1 835 1311
Fax: +353 (0)1 835 1580

Trespa Athlon Worktops

TRESPA ATHLON - HIGHLY RESISTANT AND HYGIENIC SURFACES

Trespa Athlon offers an unrivalled performance where chemical resistance is not as critical. It is extremely impact, scratch and wear resistant and not adversely affected by moisture.

IMPACT RESISTANT

The combination of a solid, homogenous core with a hard surface based on melamine resins gives Trespa Athlon exceptional impact resistance. This is confirmed by its day-to-day practical use as wall cladding in public rooms and rooms susceptible to vandalism, sanitary cubicles or as bumper rails in hospital corridors.

Scratch and Wear Resistant

The special surface structure and durability provide excellent scratch resistance. Even in heavy-duty use, Trespa Athlon retains its appearance for a very long time. The panel is highly resistant to wear, making it ideal for installation where heavy use and frequent cleaning are expected. Trespa Athlon is commonly used as office or laboratory worktop.

Moisture Resistant

Trespa Athlon is not adversely affected by moisture and is not susceptible to discoloration, mould or rot. Both the surface and the core are manufactured using specific, thermosetting resins, which make them impervious to moisture. The dimensional stability and workability of Trespa Athlon are comparable to those of hardwood.

Safe Fire Behaviour

Trespa Athlon is heat resistant. Due to the high density, Trespa Athlon ignites at relatively high temperature and carbonises in a way similar to (hard)wood. The panel material does not melt, drip or explode and retains its stability for a long period of time. Authorised testing bodies throughout the world have confirmed that Trespa Athlon Fire Retardant grade (FR) panels fall within one of the most favourable fire classes.

The choice to use either standard modified panels or fire-retardant modified (FR) panels depends on the nature and the intended use of the building project. National and/or regional fire regulations are decisive in this respect.

Environmental Considerations

Environmental considerations play a significant role in the development and manufacture of Trespa panels. Trespa International was one of the first producers of panel material to be certified according to ISO 14001, awarded by Lloyd's Register. The ISO 14001 standard describes the steps required for setting up, implementing, maintaining and improving a completely integrated environmental management system.



MANUFACTURED IN IRELAND
www.csc.ie sales@csc.ie
Phone: 353 (0)1 835 1311
Fax: +353 (0)1 835 1580

Trespa TopLab Plus Worktops

TRESPA TopLab PLUS - HIGHLY RESISTANT AND HYGIENIC SURFACES

Made specifically for use in laboratory furniture, Trespa TopLabPLUS combines high aesthetics with top performance in quality, safety and hygiene. Trespa TopLabPLUS is used extensively for laboratory worktops where the material should not influence the outcome of experiments and/or work in progress.

Trespa TopLabPLUS looks good and stays looking good whilst offering the highest possible standards of hygiene, strength and durability as well as environmentally sustainable properties.

CLEAN AND STERILE SURFACES

Hygiene, cleanliness, chemical and stain resistance are key requirements. Worktops in laboratories are especially vulnerable. The material used for them needs to be hygienic, easy to clean and maintain, durable, flexible and in line with international standards.

Trespa TopLabPLUS - the ideal and flexible solution

Trespa TopLabPLUS panels meet the requirements of most laboratories while at the same time bringing a range of additional benefits. These include chemical, wear and water resistance.

Chemical Resistance

Used extensively in chemical, analytical, micro-biological and educational laboratories world-wide, Trespa TopLabPLUS is resistant to a large number of aggressive chemicals. They will not mark a Trespa TopLab PLUS surface - if cleaned within 24 hours. Test results show the panel's 24 hour resistance.

Antimicrobial performance

Thanks to its unique surface composition, Trespa TopLab PLUS is non porous. Its anti-microbial properties are incorporated in the product without the use of coatings or additives. This means that these properties will remain active throughout the product's lifetime. Bacteria, moulds and/or other micro-organisms are unable to grow or penetrate the surface. Bacteria stains will dry relatively fast on the surface – and bacteria will not find any source of nutrition on the material.

Durability

Trespa TopLab PLUS is ideal for a multi-functional environment. Trespa TopLab PLUS worktops are versatile and provide a tough and long-lasting surface that retains its good looks for many years. Used as part of a mobile and flexible environment, Trespa TopLab PLUS delivers added strength to any laboratory or lecture room. The material's impact resistance makes it suitable for use in e.g. trolley tops.

Trespa TopLabPLUS - a sustainable and Green product

Environmental considerations play a significant role in the development and manufacture of Trespa TopLab PLUS. For the production of Trespa TopLab PLUS panels, Trespa uses a method for converting softwood from certified forests into an attractive, durable, moisture resistant and low maintenance material. Trespa TopLab PLUS is an environmentally sound solution for laboratory worktop applications both today and tomorrow.



MANUFACTURED IN IRELAND
www.csc.ie sales@csc.ie
Phone: 353 (0)1 835 1311
Fax: +353 (0)1 835 1580

MONOLITE CERAMIC WORKTOPS

MONOLITE IPERGRES® is a ceramic mixture that is fired at high temperature (1230' C) using a single-firing technique, developed with its own special blend of clay and selected minerals.

In addition to the clay mixture, Laboratorio Pesaro also makes glazes, based on its own formula, assuring strict quality control of the raw materials and one-of-a-kind range of colours. High temperature single-firing makes the ceramic mixture actually fuse with the glaze improving its surface resistance.

Six Points for a New Choice

- 1 - MONOLITE IPERGRES® worktops are super resistant although really light. Its resistance values are so high to allow a thickness of 20 mm.
- 2 - MONOLITE IPERGRES® has shown to be highly resistant to indirect tensile stress through flexural test. Its resistance values are two-threefold higher than those performed by marble and granites.
- 3 - MONOLITE IPERGRES® is frost-proof.
- 4 - MONOLITE IPERGRES® fully vitrified and glazed surface cannot absorb grease and liquids, making the surface very hygienic to use. This material cannot get stained because of its impregnability, any detergent can be used.
- 5 - MONOLITE IPERGRES® glazed surface has an excellent abrasion, scoring and scratching resistance. Equal to the one performed by the best granites and even much higher than marble abrasion resistance.
- 6 - MONOLITE IPERGRES® has brilliant impact resistance. About 60% higher than the one shown by "granito grigio perlato" (pearl grey granite)

Product Features

The worktops are completely self-supporting and do not require structural supporting frames.

- The product features a rim against overflows along all four sides; any worktop can be used individually or as a part of a combination together with others.
- In order to have non standard length tops with a rim against overflow on all four sides, the worktops can be cut and assembled "side by side".
- The worktops are supplied with a frontal glazed edge and the remaining edges can be cut to the desired size; the two short ones are finished with a special cold-applied enamelling of the same hue of the worktop.
- Worktops can be supplied with finished and glazed edges (i.e. for central benches).
- It is possible to make holes on the worktop surface for sinks of various shapes, standard or not, holes for the fittings and any kind of opening with glazed or unglazed cut edges.
- In order to optimize packing and decrease transportation costs, sinks are normally supplied as detached part. On demand, they can be assembled together.
- Special shaped worktops can be also produced manufacturing dedicated moulds.



MANUFACTURED IN IRELAND
www.csc.ie sales@csc.ie
Phone: 353 (0)1 835 1311
Fax: +353 (0)1 835 1580

LABORATORY FURNITURE

Labflow

Material Options



MANUFACTURED IN IRELAND
 www.csc.ie sales@csc.ie
 Phone: 353 (0)1 835 1311
 Fax: +353 (0)1 835 1580

LABORATORY FURNITURE

Labflow

MATERIAL PROPERTIES TRESPA ATHLON

Properties	Value	Unit	Standard
Physical properties			
Dimensional Stability	≤ 2,5	mm/m	EN 438
Density	≥ 1350	kg/m ³	ISO 1183
Weight			
Thickness 6 mm	± 8,5	kg/m ²	
Thickness 8 mm	± 11	kg/m ²	
Thickness 10 mm	± 14,0	kg/m ²	
Thickness 13 mm	± 18,5	kg/m ²	
Thickness 16 mm	± 22,5	kg/m ²	
Thickness 20 mm	± 28,0	kg/m ²	
Panel Tolerance			
Length & Width	- 0,0 / + 5	mm	EN 438
Thickness	± 0,4 for 6	mm	EN 438
	± 0,5 for 8 and 10	mm	
	± 0,6 for 13	mm	
	± 0,7 for 16	mm	
	± 0,8 for 20	mm	
Optical properties			
Resistance to dry heat at 180°C	≥ 4	Rating	EN 438
Resistance to wet heat at 100°C	≥ 4	Rating	EN 12721
Resistance to crazing	≥ 4	Rating	EN 438
Resistance to colour change (UV-A)	≥ 6	Wool scale	ASTM G53-91 (315 - 400nm)
Mechanical properties			
Modulus of elasticity	≥ 9000	N/mm ²	ISO 178
Tensile strength	≥ 70	N/mm ²	ISO 527-2
Flexural strength	≥ 100	N/mm ²	ISO 178
Resistance to impact by large diameter ball			EN 438
Drop height	1800	mm	
Diameter of indentation	≤ 10	mm	
Resistance to scratching	≥ 3	Rating	EN 438
Wear resistance for standard quality			EN 438
Initial point	≥ 150	Revolutions	
Wear value	≥ 350	Revolutions	
Chemical properties			
Resistance to staining	5	Rating	EN 438

Region	Quality	Fire classification	Standard
Behavior in case of fire			
European Union	Type FR	Euroclass B-s2d0	EN 438-7
	Type Standard	Euroclass D-s2d0	EN 438-4

Please note: Due to the CE-marking HPL panels have to be tested in accordance with EN 13501-1. National authorities decide on (the moment of) introduction of this standard in its building codes.

Disclaimer: All data is related to the products mentioned in the standard Trespa Athlon delivery program



MANUFACTURED IN IRELAND
 www.csc.ie sales@csc.ie
 Phone: 353 (0)1 835 1311
 Fax: +353 (0)1 835 1580

MATERIAL PROPERTIES TRESPA TOPLAB^{Plus}

For all Uni-colours mentioned in the standard Trespa TopLab^{Plus} delivery program.
 For other colours data available on request.

Properties	Value	Unit	USA Value	Unit	Standard
Physical properties					
Density	≥ 1350	kg/m ³	≥ 84.24	lbs/ft ³	ISO 1183
Weight					
Thickness 13 mm (1/2 in)	± 18,5	kg/m ²	± 3.8	lbs/ft ²	
Thickness 16 mm (5/8 in)	± 22,5	kg/m ²	± 4.6	lbs/ft ²	
Thickness 20 mm (3/4 in)	± 28,0	kg/m ²	± 5.7	lbs/ft ²	
Thickness 25 mm (1 in)	± 35,0	kg/m ²	± 7.2	lbs/ft ²	
Panel Tolerance					
Length & Width	- 0,0/+5	mm	- 0.0/+0.2	in	EN 438
Thickness	± 0,6 for 13	mm	± 0.024 for 1/2	in	EN 438
	± 0,7 for 16	mm	± 0.028 for 5/8	in	
	± 0,8 for 20 and 25	mm	± 0.031 for 3/4 -1	in	
Optical properties					
Resistance to dry heat at 180°C	≥ 4	Rating			EN 438
Resistance to wet heat at 100°C	≥ 4	Rating			EN 12721
Resistance to crazing	≥ 4	Rating			EN 438
Resistance to colour change (UV-A)	≥ 6	Wool scale			ASTM G53-91 (315 - 400nm)
Mechanical properties					
Modulus of elasticity	≥ 9000	N/mm ²	≥ 1,300,000	psi	ISO 178
Tensile strength	≥ 70	N/mm ²	≥ 10,100	psi	ISO 527-2
Flexural strength	≥ 100	N/mm ²	≥ 14,500	psi	ISO 178
Resistance to impact by large diameter ball					
Drop height	1800	mm	71	in	
Diameter of indentation	≤ 10	mm	≤ 0.4	in	
Resistance to scratching	≥ 4	Rating			EN 438
Wear resistance for standard quality					
Initial point	≥ 150	Revolutions			EN 438
Wear value	≥ 350	Revolutions			
Region					
Behavior in case of fire					
European Union	Type Standard		Euroclass D-s2d0		EN 438-7

Please note: Due to the CE-marking HPL panels have to be tested in accordance with EN 13501-1. National authorities decide on (the moment of) introduction of this standard in its building codes.



MANUFACTURED IN IRELAND
 www.csc.ie sales@csc.ie
 Phone: 353 (0)1 835 1311
 Fax: +353 (0)1 835 1580



INFORMATIVE TECHNICAL SHEET PRINT HPL (HGS - HGF)

Material consisting of layers of kraft paper impregnated with thermosetting resins and an outer layer, on one or both sides, of decorative paper impregnated with aminoplastic resins; all bonded together by means of heat (150 °C) and high pressure (9 MPa).

PROPERTY	TEST METHOD (EN 438: 2005)	PROPERTY or ATTRIBUTE	UNIT	VALUES
Thickness	EN 438-2.5	thickness	mm	$0,6 \leq s \leq 1 \pm 0,10$ $1,0 < s \leq 1,8 \pm 0,15$
Flatness	EN 438-2.9	deviation	mm/m	≤ 60
Resistance to surface wear	EN 438-2.10	wear resistance	revs	IP ≥ 150 A ≥ 350
Resistance to immersion in boiling water	EN 438-2.12	appearance gloss finish	rating	≥ 3
		appearance other finishes		≥ 4
Resistance to dry heat	EN 438-2.16	appearance gloss finish	rating	≥ 3
		appearance other finishes		≥ 4
Resistenza al calore umido (100° C) Resistance to wet heat	EN 12721	appearance gloss finish	rating	≥ 3
		appearance other finishes		≥ 4
Stability at elevated temperature	EN 438-2.17	cumulative dimensional change	% long.	$\leq 0,55$
			% transv.	$\leq 1,05$
Res. all'urto con sfera di piccolo diametro Res. to impact by small-diameter ball	EN 438-2.20	spring force	N	≥ 20
Res. to cracking (thin laminates)	EN 438-2.23	appearance	rating	≥ 4
Resistance to scratching	EN 438-2.25	force	rating	≥ 3



MANUFACTURED IN IRELAND
 www.csc.ie sales@csc.ie
 Phone: 353 (0)1 835 1311
 Fax: +353 (0)1 835 1580

LABORATORY FURNITURE

Labflow

Resistance to staining	EN 438-2.26	<i>appearance groups 1-2</i>	<i>rating</i>	5
		<i>appearance group 3</i>		≥ 4
Lightfastness	EN 438-2.27	<i>contrast</i>	<i>grey scale rating</i>	≥ 4
Resistance to cigarette burns	EN 438-2.30	<i>appearance</i>	<i>rating</i>	≥ 3
Resistance to water vapour	EN 438-2.14	<i>appearance gloss finish</i>	<i>rating</i>	≥ 3
		<i>appearance other finishes</i>		≥ 4
Volume electrical resistance	EN 61340-4-1	R _V (23° C / 50% RH)	Ohm	1x10 ⁹ - 1x10 ¹¹
Density	ISO 1183	<i>density</i>	gr/cm ³	≥ 1,35

FIRE PERFORMANCE

TEST METHOD	STANDARD	CLASSIFICATION	
		HGF	HGS
Small flame and radiant panel	UNI 8457 - UNI 9174 UNI 9177	classe 1	classe 1
	UNI CEI 11170-3	classe 1A	/
Spread of flame	BS 476-7	class 1	class 2
Brandschacht	DIN4102-1	B1	B2
Epiradiateur	NF P 92-501	M1	min M3
Smoke density and toxicity	NF F 16-101	min F2	min F2
Heat release	IMO Res. A 653(16)	pass	pass

Note: Fire test performance will depend on laminate thickness and construction, substrate type and thickness, and adhesive used. The laminate manufacturer should be contacted for details of test reports and certifications held, and for information on fire test methods and specifications.



MANUFACTURED IN IRELAND
 www.csc.ie sales@csc.ie
 Phone: 353 (0)1 835 1311
 Fax: +353 (0)1 835 1580

LABORATORY FURNITURE

Labflow

Collection: Solid Colors

1007MATT	1011MATT	1012MATT	1025MATT	1046MATT	1053MATT	1059MATT	1061MATT
1065MATT	1066MATT	1086MATT	1103MATT	1143MATT	1174MATT	1180MATT	1181MATT
1204MATT	130LUC	130SEI	1366MATT	1397MATT	1401MATT	1551MATT	1597MATT
1801SEI	1802SEI	1803SEI	1804SEI	1808SEI	1809SEI	1810SEI	1819SEI
1820SEI	202MATT	204MATT	406SEI	409SEI	410SEI	411SEI	412SEI
413SEI	414SEI	415SEI	417SEI	418SEI	420SEI	421SEI	423SEI
424SEI	427SEI	428SEI	429SEI	430SEI	431SEI	432SEI	435SEI
437SEI	438SEI	440SEI	441SEI	443SEI	444SEI	446SEI	451SEI
453SEI	454SEI	455SEI	456SEI	457SEI	460SEI	463SEI	464SEI
466SEI	467SEI	468SEI	469SEI	470SEI	472SEI	473SEI	475SEI



MANUFACTURED IN IRELAND
 www.csc.ie sales@csc.ie
 Phone: 353 (0)1 835 1311
 Fax: +353 (0)1 835 1580

LABORATORY FURNITURE

Labflow

Collection: Solid Colors

 476SEI	 477SEI	 478SEI	 479SEI	 480SEI	 482SEI	 483SEI	 484SEI
 485SEI	 486SEI	 487SEI	 488SEI	 491SEI	 492SEI	 494SEI	 495SEI
 496SEI	 498SEI	 499SEI	 754MATT	 801SEI	 802SEI	 804SEI	 805SEI
 810SEI	 812SEI	 813SEI	 822SEI	 823SEI	 829SEI	 830SEI	 831SEI
 832SEI	 834SEI	 835SEI	 836SEI	 837SEI	 838SEI	 839SEI	 842SEI
 843SEI	 845SEI	 846SEI	 847SEI	 849SEI	 850SEI	 851SEI	 852SEI
 853SEI	 856SEI	 857SEI	 858SEI	 860SEI	 861SEI	 862SEI	 867SEI
 868SEI	 869SEI	 870SEI	 879SEI	 887SEI	 890SEI	 891SEI	 897SEI
 898SEI							